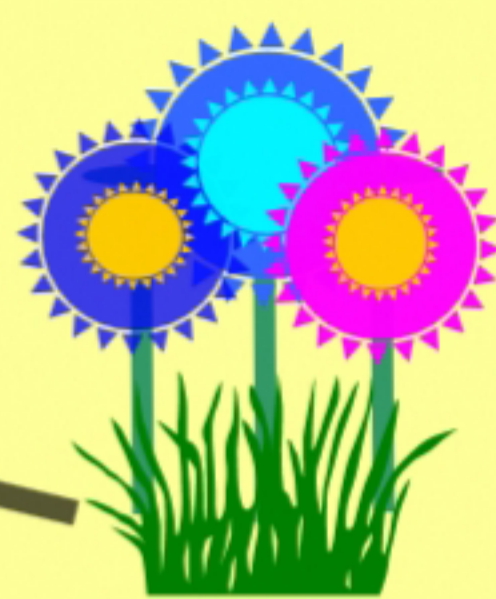
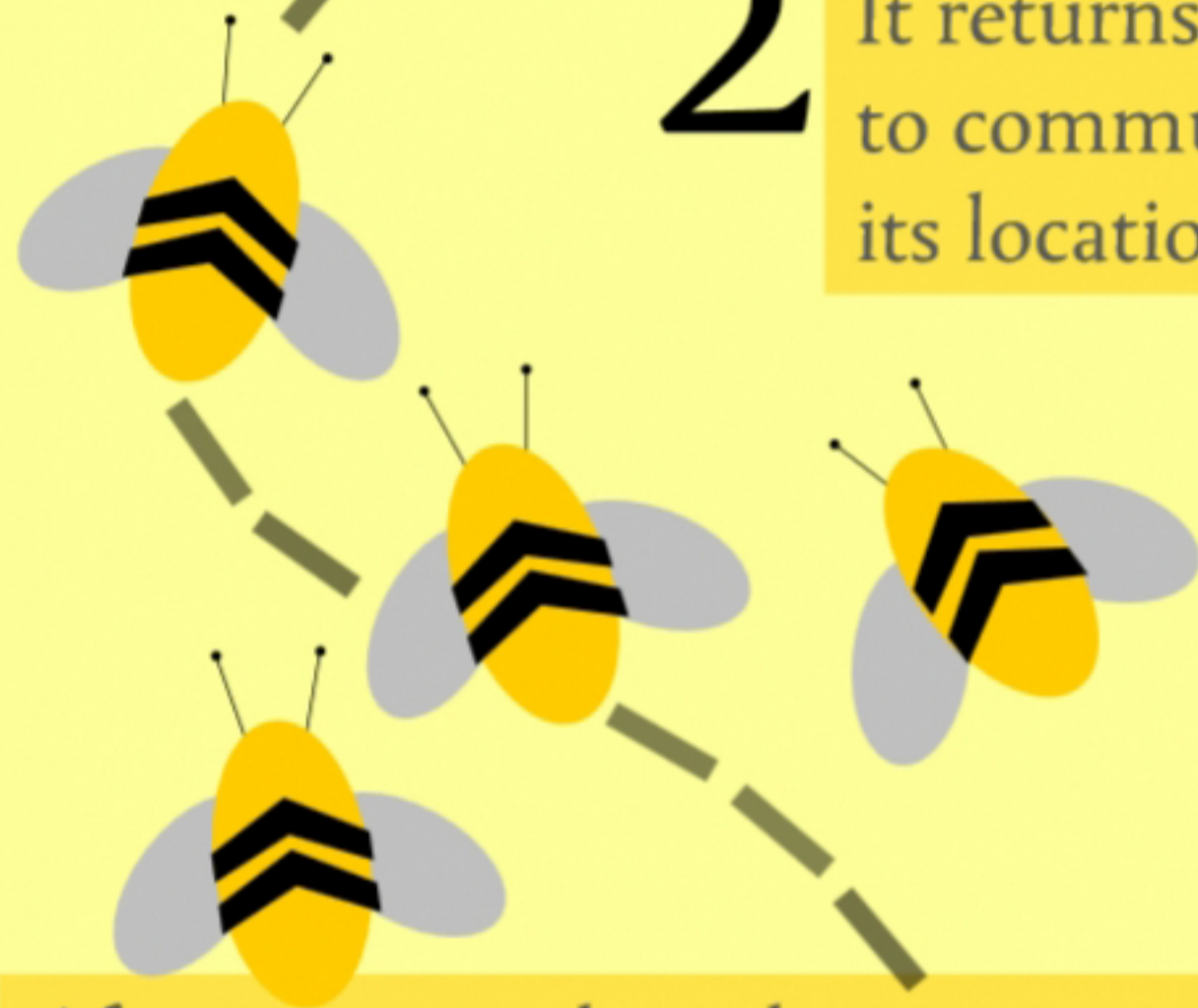


THE WAGGLE DANCE

1 A bee finds a food source while out exploring.

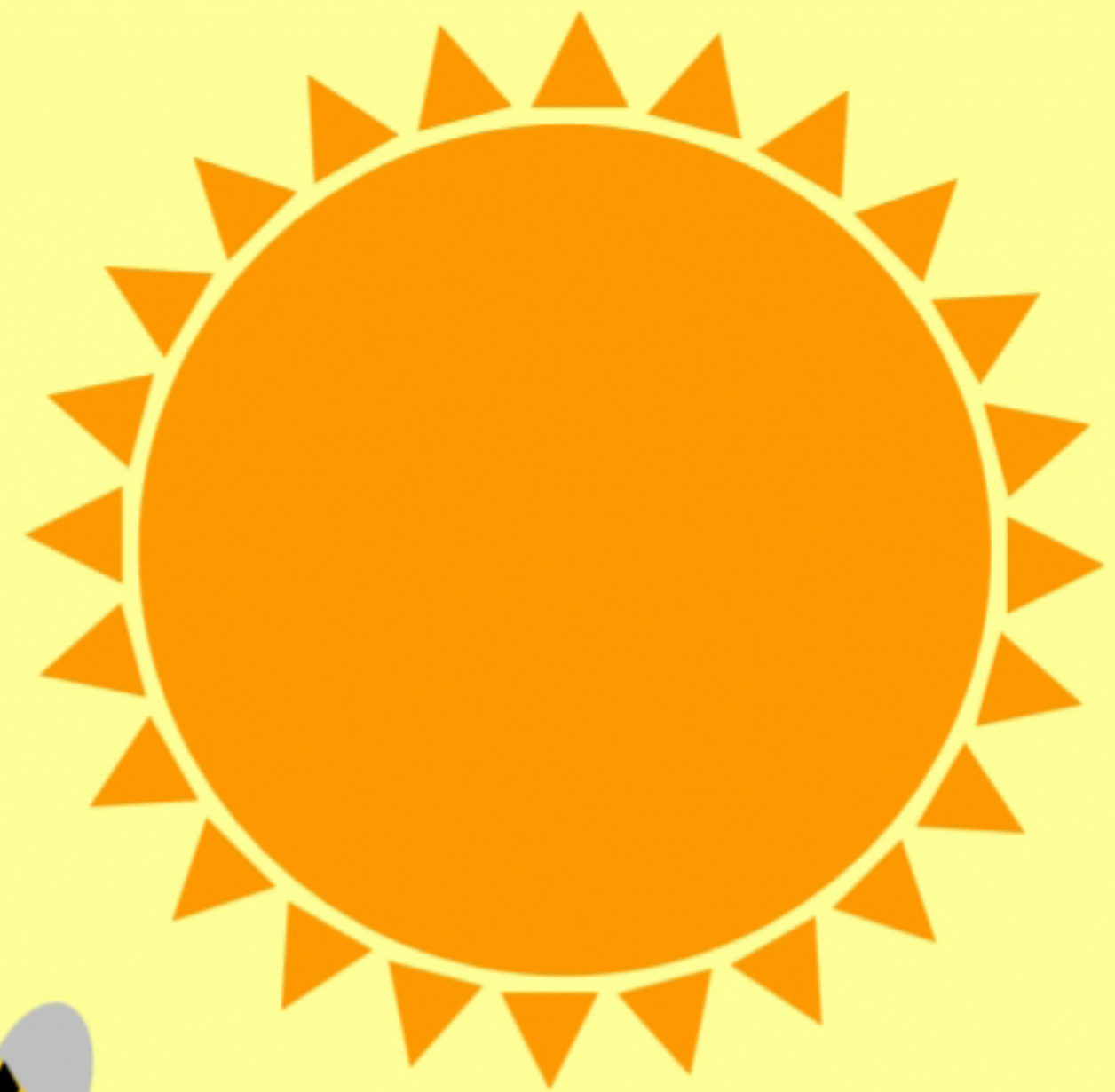


2 It returns to the hive to communicate its location.



6 After receiving these directions, the rest of the colony can fly off to harvest the newly found supplies.

3 Using the sun's position as a guide, it waggles its body in the direction of the food source.



4 The food's distance is communicated by adding extra shuffles. It has been estimated that for every 100 metres from its home, the bee will waggle for an additional 75 milliseconds.



5 The more plentiful the food source, the longer the dance will last.

