

BEE BUILDERS



Honeybees build their hives using wax from their bodies, shaped into six-sided rooms or “cells.” In these cells, bees can store their honey and protect the hive’s growing eggs. Make your own “hive” out of paper.

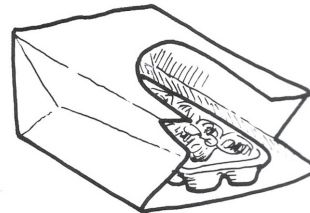
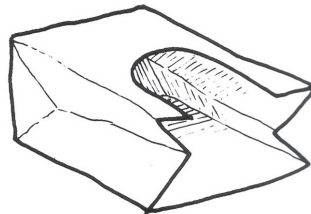
WHAT YOU’LL NEED

- A large, brown paper shopping bag
- A cardboard egg carton (or two)
- Yellow, dark brown, and white construction paper
- Wax paper
- Glue
- Scissors



WHAT TO DO

- 1** Cut an arch-shaped “doorway” in one side of your brown bag. This bag will be the hive.



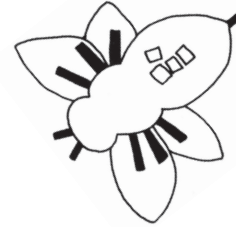
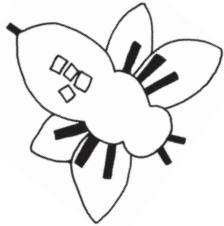
- 2** Use the bottom of a cardboard egg carton, or two, to make the “cells” that will go in the hive.
- 3** Glue small, cutout pieces of wax paper—“wax scales”—into all the egg-carton cells.

ACTIVITY CONTINUED ON NEXT PAGE (PAGE 1 OF 2)

This activity was modified and adapted from the *Buzzing a Hive Teacher’s Guide* published by LHS Great Explorations in Math and Science (GEMS).

BEE BUILDERS (ACTIVITY CONTINUED)

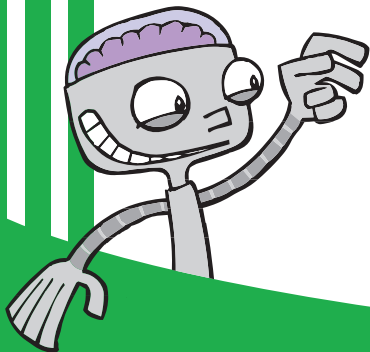
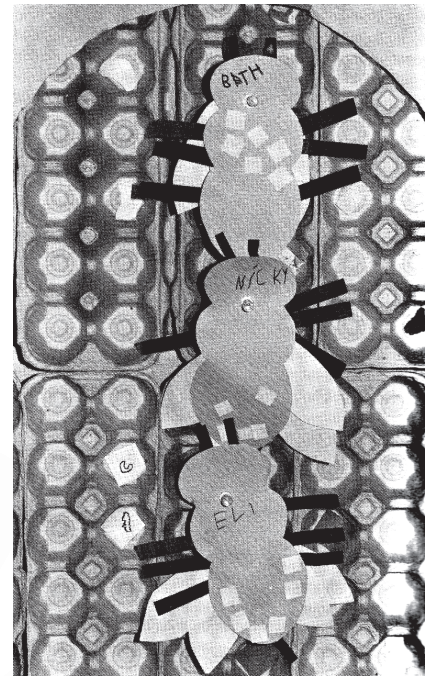
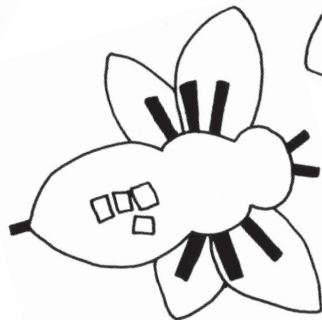
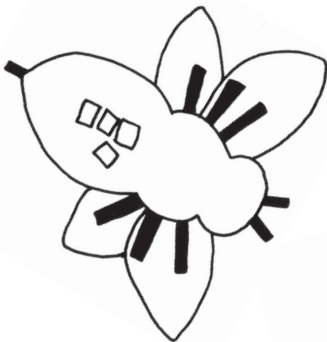
4 Glue bits of yellow paper for pollen and dark brown paper for honey into the cells. (Honey mixed with pollen makes “bee bread,” the food for growing bees.)



5 Glue one small white paper “egg” into each cell.

6 Put the cells into the hive. (If your bee eggs were real, they would develop into larvae, then pupae, then adult bees.)

7 Cut out the adult paper bees printed here, or make your own, and have fun flying them in and out of the hive!



DID YOU KNOW?

- A queen bee can lay between 1,200 and 2,000 eggs in a day!
- Scout bees perform a dance called a “waggle dance” to tell other bees where they can find flowers.

(PAGE 2 OF 2)

This activity was modified and adapted from the *Buzzing a Hive Teacher’s Guide* published by LHS Great Explorations in Math and Science (GEMS).