

## Sun

The sun is a massive ball of gas and the largest body in the solar system.

|                            |                                  |
|----------------------------|----------------------------------|
| Diameter                   | 863,400 miles<br>(1,390,000 km)  |
| Surface Temperature        | 10,800° F (6,000° C)             |
| Interior Temperature       | 27,000,000° F<br>(15,000,000° C) |
| Rotational Period          | 25–36 days                       |
| Estimated Age              | 4.5 billion years                |
| Primary Chemical Component | Hydrogen                         |

## Mercury

Mercury is the closest planet to the sun and the smallest in the solar system.

|                            |                                     |
|----------------------------|-------------------------------------|
| Diameter                   | 3,031 miles<br>(4,880 km)           |
| Natural Satellites         | 0                                   |
| Distance from the Sun      | 35,974,272 miles<br>(57,910,000 km) |
| Rotational Period          | 58.65 days                          |
| Orbital Period             | 87.97 days                          |
| Surface Temperature        | 354° F (179° C)                     |
| Main Atmospheric Component | Helium                              |

## Venus

The second planet from the sun, cloud-covered Venus rotates from east to west.

|                            |                                      |
|----------------------------|--------------------------------------|
| Diameter                   | 7,518 miles<br>(12,103 km)           |
| Natural Satellites         | 0                                    |
| Distance from the Sun      | 67,214,920 miles<br>(108,200,000 km) |
| Rotational Period          | 243.0 days                           |
| Orbital Period             | 224.7 days                           |
| Surface Temperature        | 899° F (482° C)                      |
| Main Atmospheric Component | Carbon Dioxide                       |

## Earth

The only planet with liquid water on its surface, it is the only planet to support life.

|                            |                                      |
|----------------------------|--------------------------------------|
| Diameter                   | 7,924 miles<br>(12,756 km)           |
| Natural Satellites         | 1                                    |
| Distance from the Sun      | 92,933,000 miles<br>(149,600,000 km) |
| Rotational Period          | 23 hours, 56 mins                    |
| Orbital Period             | 365.2 days                           |
| Surface Temperature        | 354° F (179° C)                      |
| Main Atmospheric Component | Nitrogen                             |

## Mars

The fourth planet from the sun is a barren, rocky, rusty red world.

|                            |                                       |
|----------------------------|---------------------------------------|
| Diameter                   | 4,220 miles<br>(6,794 km)             |
| Natural Satellites         | 2                                     |
| Distance from the Sun      | 141,050,000 miles<br>(227,940,000 km) |
| Rotational Period          | 24.62 hours                           |
| Orbital Period             | 687 days                              |
| Surface Temperature        | -81° F (-63° C)                       |
| Main Atmospheric Component | Carbon Dioxide                        |

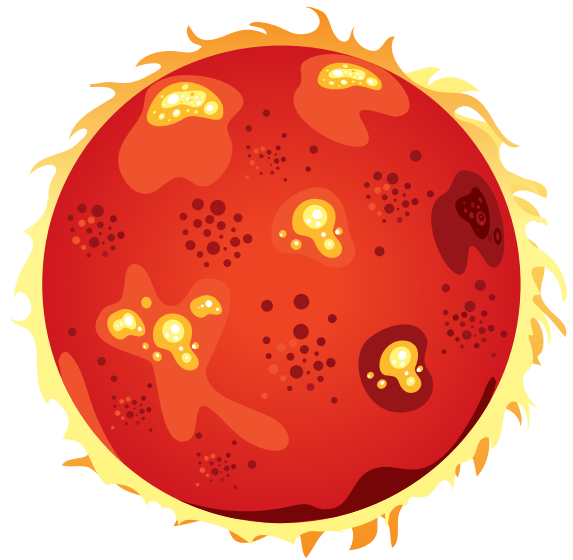
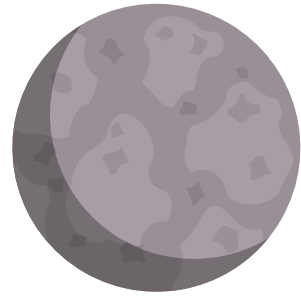
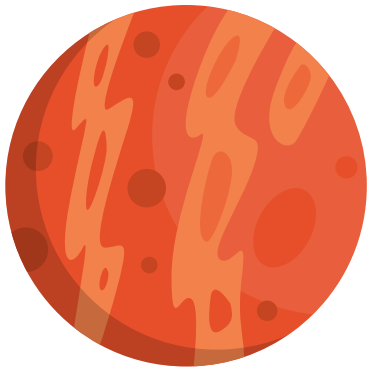
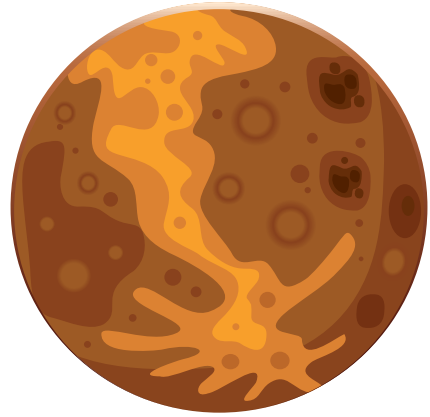
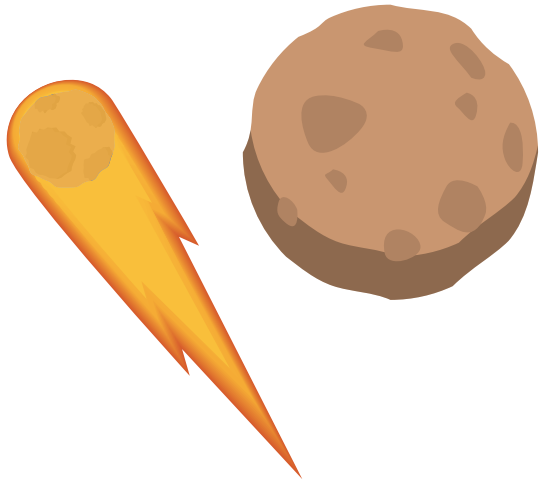
## Asteroids and Comets

**Asteroids** are big space rocks left over from when the solar system formed about 4.6 billion years ago. Most asteroids orbit the sun within the main asteroid belt between Mars and Jupiter.

Number of known asteroids: 794,770

**Comets** are the oldest, most primitive bodies in the Solar System. They are huge snowballs of frozen gases, rock, and dust that orbit the sun. When close to the sun, a comet heats up, and its dust and gases form a tail that stretches for millions of miles.

Number of known comets: 3,570



## Jupiter

Almost twice the size of all of the other planets combined and has a giant red spot.

|                            |                                       |
|----------------------------|---------------------------------------|
| Diameter                   | 88,823 miles<br>(142,984 km)          |
| Natural Satellites         | 64 known                              |
| Distance from the Sun      | 482,546,000 miles<br>(778,330,000 km) |
| Rotational Period          | 9.84 hours                            |
| Orbital Period             | 4333 days                             |
| Cloud Temperature          | -185° F (-121° C)                     |
| Main Atmospheric Component | Hydrogen                              |

## Saturn

Saturn, a gas giant with three main bands of rings, is called the jewel of the solar system.

|                            |   |
|----------------------------|---|
| Diameter                   | 74,565 miles<br>(120,536 km)            |
| Natural Satellites         | 62                                      |
| Distance from the Sun      | 884,740,000 miles<br>(1,429,400,000 km) |
| Rotational Period          | 10.25 days                              |
| Orbital Period             | 29.46 years                             |
| Cloud Temperature          | -193° F (-125° C)                       |
| Main Atmospheric Component | Hydrogen                                |

## Uranus

The only planet that rotates on its side, Uranus is a featureless blue-green sphere.

|                            |   |
|----------------------------|---|
| Diameter                   | 31,755 miles<br>(51,118 km)               |
| Natural Satellites         | 27  |
| Distance from the Sun      | 1,783,487,000 miles<br>(2,870,990,000 km) |
| Rotational Period          | 17.3 hours                                |
| Orbital Period             | 84 years                                  |
| Cloud Temperature          | -315° F (-193° C)                         |
| Main Atmospheric Component | Hydrogen                                  |

## Neptune

A giant blue sphere with unusual cloud features and a thin, dark system of rings.

|                            |   |
|----------------------------|---|
| Diameter                   | 30,744 miles<br>(49,492 km)               |
| Natural Satellites         | 13  |
| Distance from the Sun      | 2,798,116,000 miles<br>(4,504,300,000 km) |
| Rotational Period          | 15.8 hours                                |
| Orbital Period             | 165 years                                 |
| Cloud Temperature          | -315° F (-193° C)                         |
| Main Atmospheric Component | Hydrogen                                  |

## Pluto

Pluto is officially classified as a dwarf planet and has an oval and tilted orbit.

|                            |   |
|----------------------------|---|
| Diameter                   | 1,473 miles<br>(2,370 km)                 |
| Natural Satellites         | 5   |
| Distance from the Sun      | 3,673,537,000 miles<br>(5,913,520,000 km) |
| Rotational Period          | 6.3 days                                  |
| Orbital Period             | 248 years                                 |
| Surface Temperature        | -382° F (-230° C)                         |
| Main Atmospheric Component | Methane                                   |

## Moon

Our moon is the 5th largest of the 190+ moons orbiting planets in the solar system.

|                            |                               |
|----------------------------|-------------------------------|
| Diameter                   | 2,160 miles<br>(3,476 km)     |
| Natural Satellites         | 0                             |
| Distance from the Earth    | 238,800 miles<br>(384,400 km) |
| Rotational Period          | 27.32 days                    |
| Orbital Period             | 27.32 days                    |
| Surface Temperature        | 0° F (-17° C)                 |
| Main Atmospheric Component | Hydrogen                      |

